



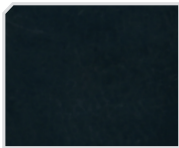
# [ E-LOCKERS SPECIFICATIONS

- Metal components are manufactured using 16- and 18-gauge carbon steel; powder-coated for long-lasting durable finish
- All electronic components operate on 12V DC for safety and reliability
- All electronic components have been rigorously field tested for durability
- All cabinets and access kiosks have integrated bases with leveling points
- Door hinge pins, locking pins and door springs are manufactured from stainless steel
- Cabinets and access kiosks are shipped fully assembled and ready to be installed
- Hardware is included to attach E-locker products to form a bank
- Installation by qualified GSS Lockers dealer staff, must have access to power and internet connection

## Custom powder-coat finishes available:

Please request a colour card or painted steel sample. 

### Standard



633 Charcoal



501 Black Sandtex



223 Oyster



803 Flagstone



503 Beige Sandtex



502 Black

### Upgrade



124 Pearl Grey



484 Beige



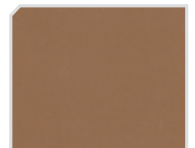
895 Vista Green



411 Sky Blue



632 Burgundy



482 Spice

Custom colours and combinations are also available at extra cost.  
Colours are available with an anti-graffiti finish at extra cost.

## [ E-LOCKERS

More Secure | Fewer Lockers  
Uses Less Floor Space | Traceable and Alarmed



1-800-265-9055  
sales@gsslockers.com  
[www.gsslockers.com](http://www.gsslockers.com)  
[www.elockersinc.com](http://www.elockersinc.com)